

CAPTAIN  
FANTASTIC

LET'S MAKE A...

**SUPER-DUPER  
ROCKET**



★ Captain Fantastic's  
To-Do List of  
Super fun ideas! ★

---

1. Build a superhero wall out of empty cardboard boxes to smash down, and save the day!
2. Make up and draw your very own superhero costume, and decide what your super powers would be!
3. Make a super-duper Captain Fantastic rocket!

# CAPTAIN'S SUPER ROCKET

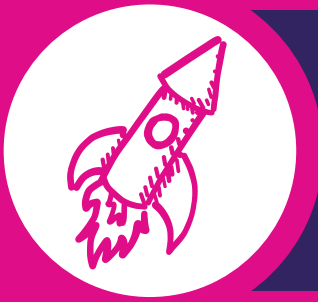
## What will we need?

An empty loo roll  
Compass  
Pencil  
A sheet of A4 card  
Scissors

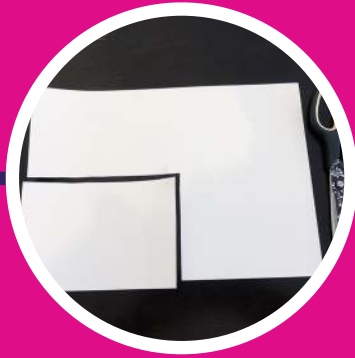
Ruler  
Tin foil  
Your two favourite colours  
Glue







# MAKING THE PARTS

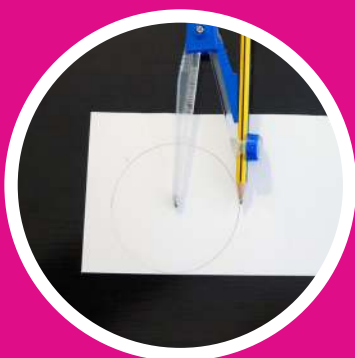


## Step One

Measure how much card you will need to cover your toilet roll. Remember to leave a little bit of extra room each side to glue, then cut it out.

## Step Two

Colour your rectangle with one of your favourite two colours. This will be the main colour of your rocket ship.



## Step Three

Measure 5cm with your compass and ruler, and draw a circle to begin making the nosecone of your rocket.



# MAKING THE PARTS



## Step Four

Draw a line from the center point to the outside of your circle and then cut it out.



## Step Five

Colour in your circle with your second favourite colour.



## Step Six

Cut through the line you made on your circle. This will let you to shape it into a cone later.



# MAKING THE PARTS



## Step Seven

Draw a triangle that is much wider than your toilet roll, with at least a 9cm base, and cut it out.



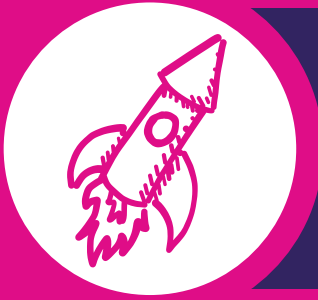
## Step Eight

Colour in your triangle with your second colour on both sides. These will be the fins on the sides of your rocket.



## Step Nine

Measure 2cm on your compass and draw a circle. Then measure 1.5cm on your compass and draw a circle and cut both of these shapes out.



# MAKING THE PARTS



## Step Ten

Colour in the 2cm circle with your second colour and wrap the 1.5cm circle with a piece of foil.

## Step Eleven

Stick the 1.5cm circle onto the 2cm circle to create the porthole for your rocket ship.



# We're ready to assemble!

# Let's put it all together!



## Step Twelve

Glue and wrap your coloured rocket body cover onto your loo roll, then glue your porthole to the rocket.

## Step Thirteen

Cut two 3cm slits at the bottom of your rocket ship, one on each side of the window, and glue your triangle fins into the slits.



## Step Fourteen

Fold your nosecone circle around itself to form a cone, and glue it together. Then glue the nosecone to the top of your rocket ship.

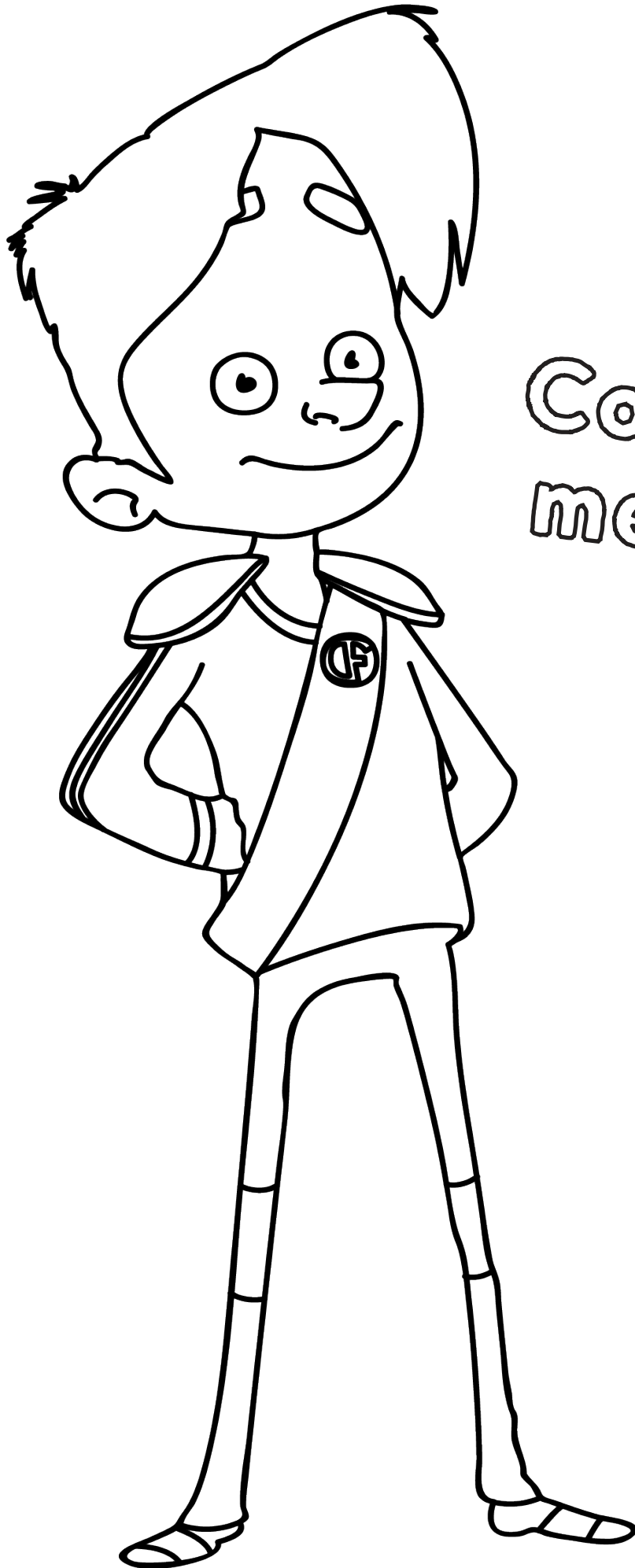


# FINISHED!



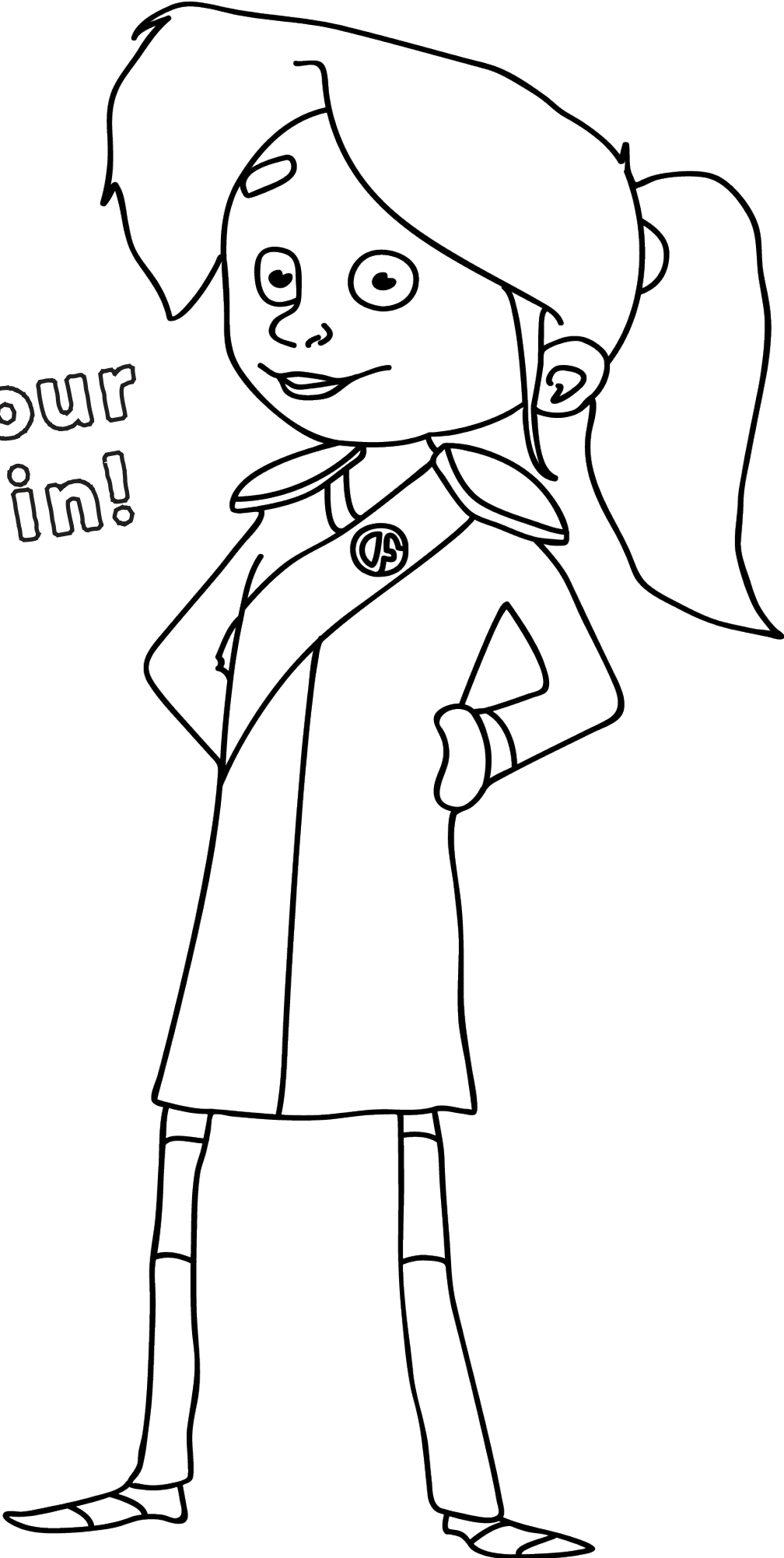


**READY  
FOR  
TAKEOFF!**



Colour  
me in!

Colour  
me in!



# CAPTAIN FANTASTIC

WWW.CAPTAIN-FANTASTIC.CO.UK



@CAPTAINFANTASTICKIDS